

Panasonic

LFB70 Series

Multi-touch Screen LED Displays

LFC70 Series

Network LED Displays

New Ideas for Creative Communication



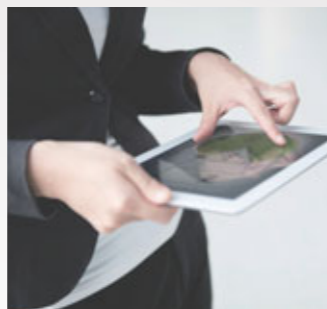
LED

Multi-touch Screen LED Displays

80-inch **TH-80LFB70**
65-inch **TH-65LFB70**
50-inch **TH-50LFB70**

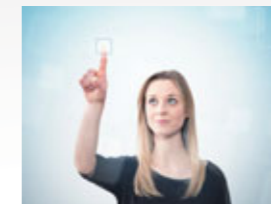
Network LED Displays

80-inch **TH-80LFC70**
65-inch **TH-65LFC70**
50-inch **TH-50LFC70**



Work Smarter

The LFB70 Series of professional Full HD displays incorporate intuitive touchscreen technology, fully interactive whiteboard functionality, and the very latest in wireless connectivity to allow you and your colleagues to work more closely as a team. These displays are loaded with the next-generation technology you need to be more productive, more efficient, and to achieve better quality results.



Simple Touch Control

Progress smoothly through your presentation using familiar touchscreen gestures to turn pages, zoom in and out content, and navigate through multimedia functions without need of a remote control. Whether using a fingertip to cue content for a presentation, or the stylus pen to jot down notes for the group, you'll be delighted at how this user-friendly touch interface makes complex tasks simple.



Work Together On Screen

Built-in whiteboard software lets you turn on the display and start work right away—no need to connect a PC. Up to four people can write at a time, and you can save your pages and email them directly to anyone who missed the meeting. Notes can be made on almost anything, from video and photos to PowerPoint® and PDF documents, and then saved as an image file—simply brilliant for the office or classroom.



LFB70 Series

Multi-touch Screen LED Display
80-inch / 65-inch / 50-inch



More Productive Remote Meetings

With vibrant Full HD resolution and a wide display area, remote videoconference participants seem like they're in the room with you. Team members in remote locations can write detailed notes onto shared documents and solve problems in real time, just as they would when working together in the office. These powerful web and videoconferencing capabilities reduce the need for travel, saving your organization time and money.



Boost Your Performance

Panasonic professional LED displays are loaded with features to make working, communicating, and getting results easy. From the touch-panel and whiteboard functions of the LFB70 Series—which allow you to get to work instantly, writing on and saving documents, with no need for a connected PC—to the ultra-flexible wireless features of the LFC70 Series, these displays give you a genuine advantage by letting you work smarter, faster, and more effectively.



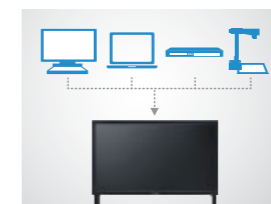
Share and Collaborate

Make it easier for your team to share media content from smartphone, PC, and tablet on one of the industry's most advanced big-screen displays. A number of next-generation wireless technologies are included to support a wide variety of devices and media formats, so all members of your team can contribute to the flow of ideas in the office, classroom, or conference center.



Wireless Options for Mobile and PC

It's simple to get documents from different network-attached devices—such as notebooks, smartphones, and tablets—onto the big screen. These pro displays are compatible with Miracast™ (which doesn't require any software to mirror certain content) as well as dedicated apps that get the media you want up and on screen faster, with no cables or complicated setup.

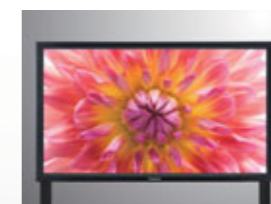


Better Connectivity and Flexibility

With Panasonic's DIGITAL LINK, based on HDBaseT™ technology, and SLOT2.0 (which allows for easy installation and removal of customized terminal boards or a modular PC), it costs less money and time to set up the display exactly to your requirements. Compatibility with leading automation systems and switching devices lets you seamlessly integrate these displays into an existing A/V network.

LFC70 Series

Network LED Display
80-inch / 65-inch / 50-inch



Superior Imaging Quality

Panasonic professional LED panels combine the best of both worlds—brilliant Full HD imaging performance and the remarkable efficiency of edge-lighting. Compared with conventional backlit screens, Panasonic edge-lit LED displays are able to deliver bright, punchy images while consuming less energy. Both the LFB70 and LFC70 produce an impressive 350 cd/m² of brightness for vividly clear pictures.

TOUCH

A brilliant Full HD touchscreen absolutely anyone can use.



CONNECT

A display that makes team communication more efficient and effective.

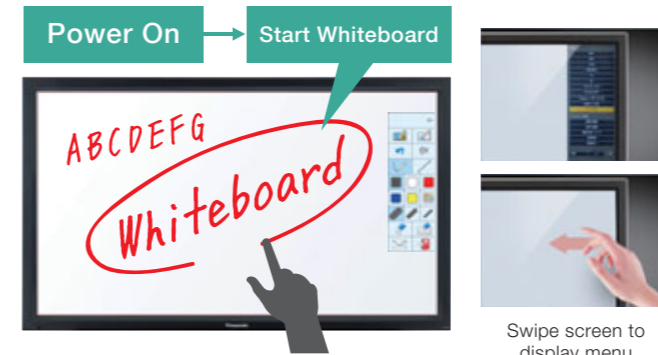


Create and Share On the Built-in Whiteboard

LFB70

Quick-Start Whiteboard

Start working on the built-in whiteboard instantly—just switch on the display. You can draw straight or freehand lines, and change line thickness, color, and background using the tool palette. To switch input sources, picture settings, and volume, swipe the edge of the screen to display the main menu—no remote control necessary.



Swipe screen to display menu

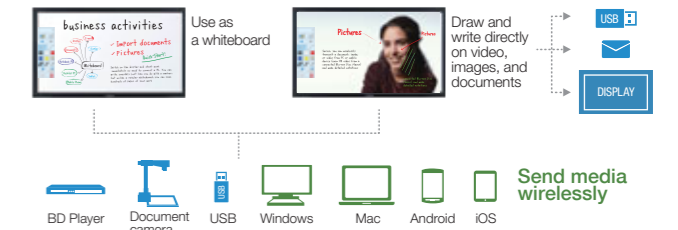
Easy and Intuitive Operation

Four-point multi-touch functionality makes it easy to resize and move graphics around on your documents. The included Stylus Pen and Eraser accessory is a convenient way to write large amounts of text. So simple to use, even for children and less technically experienced presenters.



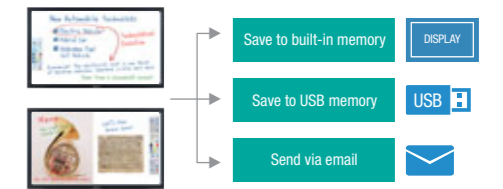
Write and Draw On Media from External Devices

You can write on almost any media you like, including video and still images. Swipe to bring up the main menu, display content from your external device, and start making notes. These dynamic multi-media capabilities make it easy for teams to share information and contribute ideas.



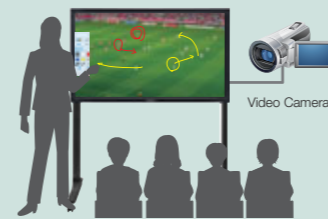
Easy Save and Share

Produce up to 100 pages of work on the whiteboard and save them to the built-in memory* or USB thumb drive as JPEG image files. You can also copy data stored on internal memory to a USB drive, or send your pages as image files directly from the screen via email**. Keeping everyone in the loop is simple.



Connect a Variety of Devices

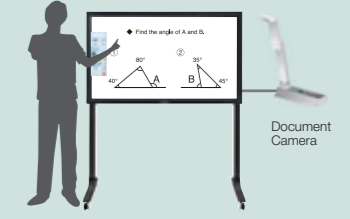
Connect your video camera and write over the captured footage. You can also pause on a desired frame, take a screenshot, and make notes on the image. Perfect for a variety of applications, from strategic planning to video lectures.



View documents and photos stored on USB memory quickly. Just plug in your thumb drive and tap on the USB Memory Viewer app. No time wasted, and a deeper, more effective presentation.



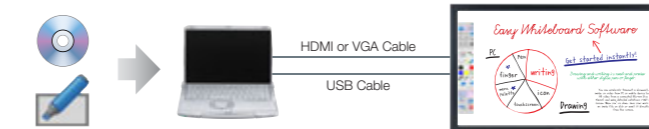
To display hard-copy materials such as textbook pages, connect your document camera via the appropriate display input. High resolution, brightness, and contrast make for clear and comfortable viewing of text and diagrams.



Whiteboard Software for PC Extends Your Capabilities

Whiteboard Software for PC offers extra functionality for power users. As well as adding extra presentation tools and a PowerPoint® Link mode to easily import and modify PowerPoint files, the application's six-point touch interface lets up to six people write and draw simultaneously. Other highlights include:

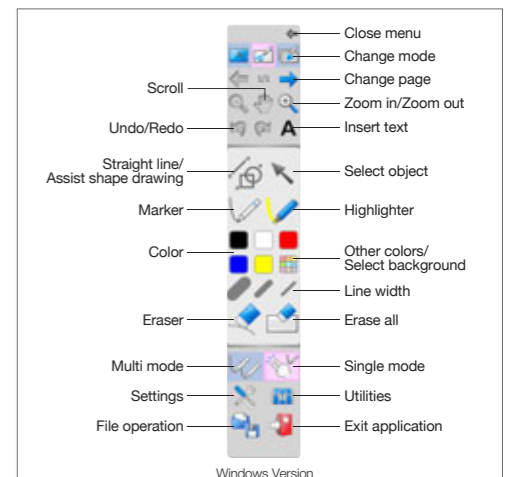
- Three modes of operation** (Whiteboard Function, PowerPoint® Link Mode, and Desktop Operation)
- More presentation tools** (Loupe, Spotlight, Shade, Fade-out Marker)
- Screen video recorder function**
- Image capture
- Image import (JPEG, PNG, BMP)
- Start-up from external memory**



Whiteboard Software Version 5 for Windows
Supported by Windows® XP, Windows Vista®, Windows® 7, Windows® 8 and Windows® 8.1

Whiteboard Software Version 1 for Macintosh
Supported by Mac OS X v10.6, v10.7, v10.8, v10.9

For the latest software, please visit our global website:
<http://panasonic.net/prodisplays/>



Wireless and USB Connectivity

LFB70 LFC70

Instant Playback of Content via USB

Playing back Full HD video, still images, and digital documents from USB storage devices couldn't be easier. Just insert the memory device into the display's USB port and commence your presentation without having to first connect a PC. The USB Memory Viewer app enables image (JPEG, BMP) and video (WMV, AVI, MOV, MP4, MPG) selection from handy thumbnail previews.



Miracast™ for Instant Wireless Sharing

Transmit documents, Full HD video, images, and audio from compatible Android devices and Windows PCs to the big screen with Miracast™—the latest wireless standard that doesn't require software or complicated setup. With no cables, fast connection, and very high bandwidth to enable display of 1080p video at up to 60 frames per second, Miracast™ is a powerful tool for sharing media without cable hassles.



For list of tested Miracast™-compatible devices, please visit our global website: <http://panasonic.net/prodisplays/>

Panasonic Wireless Solution with Multi-Screen Functions



Easy Wireless Display of PC Screen

PC users can use Wireless Manager ME 6.0.2** software to wirelessly transmit content from their computer screen (including audio***) to LFB70 and LFC70 series displays. Simultaneous transmission from up to 16 devices is enabled in Multi-Screen Mode, while one PC can also send content to up to eight displays.

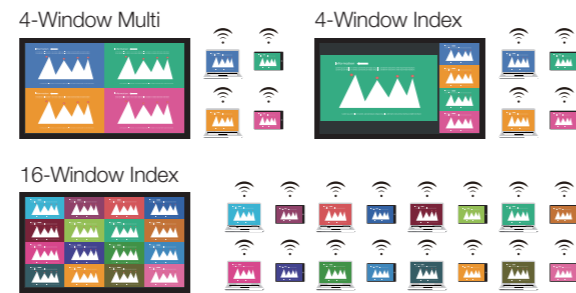
Save Time with Easy Wireless Stick

The optional Easy Wireless Stick (ET-UW100***) incorporates built-in wireless application software and a wireless LAN adapter. Connect it to your laptop's USB port and send your PC screen to the display wirelessly, with no need to install software. This feature is useful for allowing visiting clients or students to share content when time is limited.



Wireless Apps for iOS

The Panasonic Wireless Projector for iOS app enables wireless transmission of media from iPad®, iPhone®, and iPod touch®. Share PowerPoint® documents and PDF files quickly and conveniently on the big screen. The app also supports simultaneous display from multiple devices using Multi Mode.



System Flexibility

LFB70 LFC70



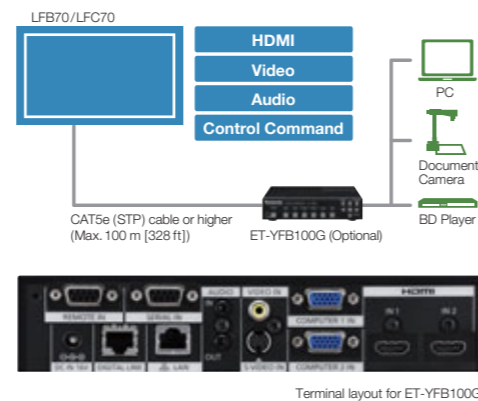
Simplified DIGITAL LINK Connection

DIGITAL LINK transmits uncompressed Full HD video, audio, and control commands through a single CAT5e cable for up to 100 m (328 ft). Connect all your source devices to an optional Digital Interface Box (ET-YFB100G) and use just one cable to link your display. This simplifies installation and saves on cabling costs.

Compatible with Other Brands' Peripheral Devices

Based on the HDBaseT™ transmission standard formulated by HDBaseT Alliance, DIGITAL LINK is adapted to support specialized proprietary functions. These enable the connection of the Digital Interface Box (ET-YFB100G) as well as other brands' peripheral devices supporting the same transmission standard.

For list of tested compatible peripheral devices, please visit our global website: <http://panasonic.net/prodisplays/>



Terminal layout for ET-YFB100G



Expand and Customize with SLOT2.0

SLOT2.0 allows you to add the functionality and connectivity needed for almost any application. Optional function boards including HDMI and HD-SDI can be mounted to support a customized content distribution system. The optional Plug-in PC (PLUGTHA54)***, meanwhile, can be configured for easy access to web conferencing systems and Whiteboard Software.



Supports Crestron Connected™ Software

The displays' wired LAN terminal is compatible with Crestron Connected automation and control software. You can monitor and control display devices in your network remotely from a single PC via Ethernet.

Connect a Second Display

Use a VGA cable to mirror® content on a second display or projector—even the notes you might add to documents, images, or video during your presentation. This dual-display capability makes both the LFB70 and LFC70 series ideal for use in larger venues.

Supported Inputs: HDMI/DVI/PC/Memory Viewer/Whiteboard



Compliance with PJLink™

Compliance with PJLink Class 1 enables remote control and monitoring of LFB70 and LFC70 series displays within a wider network of PJLink-compatible AV components of any brand. Incorporating these displays into an existing system via the local network is seamless and cost effective.



Loaded with High-Value Features

LFB70 LFC70

Picture-in-Picture Capability

Picture-in-Picture functions offer the versatility to display images from multiple input sources on the same screen. Documents, videos, and stills can be displayed full-screen with a sub-window showing content from a different source.

Note: Writing and drawing on sub screen is not available. Miracast™ and Memory Viewer do not support Picture-in-Picture capability. The following input combinations are not available:

- HDMI, DVI, DIGITAL LINK, Component, and PC
- Whiteboard and Panasonic Application



Picture-in-Picture Mode

Ideal for web conferencing, you can display meeting documents on the main screen and live video footage from a remote location in the sub-window.

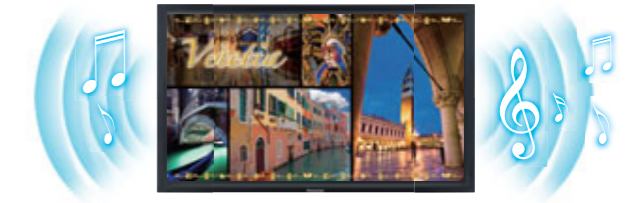


Picture-in-Whiteboard Mode

Display media in a window on the whiteboard interface and make notes on the blank space surrounding it.

Built-in Speaker

Both the LFB70 and LFC70 series feature a pair of built-in 20 W [10 W + 10 W] speakers for audio playback for audio-video presentations.



Toughened Non-Reflective Glass Provides Clear Visibility

The non-reflective screen surface makes content easy to see in bright ambient illumination. Toughened scratch-resistant glass is designed for touch operation while enhancing the level of impact protection—perfect for classrooms or busy meeting rooms.

Optional Accessories

Mobile Stand For 80-inch TY-ST80LF70 For 65-inch TY-ST65PB2	For 50-inch TY-ST50PB2 TY-ST58PF20	Wall-Hanging Bracket For 80-inch TY-WK70PV50 (Vertical) For 65-inch TY-WK65PR20 (Vertical/Angled)	For 50-inch TY-WK42PV20 (Vertical) TY-WK42PR20 (Angled)	Pedestal For 80-inch/65-inch TY-ST65P20 For 50-inch TY-ST42P50	Ceiling Bracket For 50-inch TY-CE42PS20	DIGITAL LINK Interface Box ET-YFB100G	Easy Wireless Stick ET-UW100®
---	--	---	---	--	---	---	-------------------------------------

Optional Function Board

Dual Video Terminal Board TY-FB9BD	DVI-D Terminal Board TY-FB11DD	Dual HDMI Terminal Board TY-FB10HMD	HD-SDI Terminal Board TY-FB9HD	HD-SDI Terminal Board with Audio TY-FB10HD	Dual Link HD-SDI Terminal Board with Audio TY-FB11DHD	Plug-in PC PLUGTHA54**
--	--------------------------------------	---	--------------------------------------	--	--	---------------------------

** Built-in memory ON/OFF is included. When OFF is selected, only one whiteboard page can be created. ** Can be sent as JPEG format only. ** For Windows® only. ** Supported by Windows® XP/Windows Vista®/Windows® 7/Windows® 8, and Macintosh (Mac OS X v10.6/v10.7/v10.8). ** Windows® 7 and Windows Vista® users must log in using the Administrator's account. When a Windows® 7-equipped computer is first used, the sound driver may require adjustment. ** The ET-UW100 cannot transfer audio files. Only the 16-Window Index Style can be used in Multi-Live Mode. The ET-UW100 is available in the following countries and regions as of October 2013: North America, England, Germany, France, Spain, Italy, Belgium, Austria, Sweden, Norway, Denmark, Switzerland, Holland, Finland, Portugal, Greece, Australia, and Japan. A firmware update is necessary before using the ET-UW100. For more information, please visit our Professional Display global website at <http://panasonic.net/prodisplays/> ** PLUGTHA54 is available in Americas and Europe only. ** Supports 1080/60p signal only.

Product Specification

Model No.	TH-80LFB70	TH-65LFB70	TH-50LFB70	TH-80LFC70	TH-65LFC70	TH-50LFC70
DISPLAY PANEL						
Screen Size (Diagonal)	80-inch (2,032 mm)	65-inch (1,638 mm)	50-inch (1,257 mm)	80-inch (2,032 mm)	65-inch (1,638 mm)	50-inch (1,257 mm)
Panel Type	LCD VA panel/E-LED					
Aspect Ratio	16:9					
Effective Display Area (WxH)	1,771 x 996 mm (69.7" x 39.2")	1,428 x 803 mm (56.2" x 31.6")	1,095 x 616 mm (43.1" x 24.2")	1,771 x 996 mm (69.7" x 39.2")	1,428 x 803 mm (56.2" x 31.6")	1,095 x 616 mm (43.1" x 24.2")
Number of Pixels (HxV)	1,920 x 1,080 pixel					
Brightness	350 cd/m ²					
Contrast Ratio	5,000:1	4,000:1	5,000:1	5,000:1	4,000:1	5,000:1
Response Time	4 ms (G to G)	6.5 ms (G to G)	6.5 ms (G to G)	4 ms (G to G)	6.5 ms (G to G)	6.5 ms (G to G)
Viewing Angle (Horizontal/Vertical)	176 degrees/176 degrees	178 degrees/178 degrees	176 degrees/176 degrees	176 degrees/176 degrees	178 degrees/178 degrees	176 degrees/176 degrees
Panel Life*	Approx. 50,000 hours*	Approx. 50,000 hours*	Approx. 30,000 hours*	Approx. 50,000 hours*	Approx. 50,000 hours*	Approx. 30,000 hours*
*Approximate time until panel brightness decreases to half of its original value.						
TOUCH PANEL						
Detection Method	Infrared blocking detection method			N/A		
PC Connection Port	USB (3.0 compliant)			N/A		
CONNECTION TERMINAL						
VIDEO IN	BNC x 1					
AUDIO IN (L/R)	Stereo mini jack x 1 (Shared with COMPONENT/RGB IN)					
HDMI IN	HDMI TYPE A connector x 2					
COMPONENT/RGB IN	BNC x 1 set					
AUDIO IN (L/R)	Stereo mini jack x 1 (Shared with VIDEO IN)					
DVI-D IN	DVI-D 24-pin (digital) x 1					
AUDIO IN (L/R)	Stereo mini jack x 1 (Shared with PC IN)					
PC IN	Mini D-sub 15-pin (female) x 1, Plug & Play (VESA DDC 2B)					
AUDIO IN (L/R)	Stereo mini jack x 1 (Shared with DVI-D IN)					
PC OUT	Mini D-sub 15-pin x 1					
Function Slot	SLOT 2.0 x 1					
USB A	USB TYPE A connector x 1 (For Memory Viewer)					
USB B	USB TYPE B connector x 1 (For Touch Panel)			N/A		
External Speaker	8 Ω, 20 W [10 W + 10 W] (10% THD)					
CONTROL						
SERIAL	D-sub 9-pin (male) x 1, RS-232C compatible					
DIGITAL LINK	RJ45 x 1 (Shared with LAN)					
LAN	RJ45 x 1, 100 BASE-TX, compatible with PLink™ (Shared with DIGITAL LINK)					
AUDIO/ELECTRICAL						
Built-in Speaker	20 W [10 W + 10 W]					
Power Requirements	110–127 V AC, 50/60 Hz, 220–240 V AC, 50/60 Hz					
Power Consumption	350 W	215 W	140 W	345 W	210 W	135 W
Power Off Condition	Approx. 0.3 W					
Standby Condition	Approx. 0.5 W					
MECHANICAL						
Dimensions (WxHxD)	1,868 x 1,093 x 104 mm (73.6" x 43.1" x 4.1")	1,517 x 892 x 106 mm (59.8" x 35.2" x 4.2")	1,185 x 705 x 103 mm (46.7" x 27.8" x 4.1")	1,868 x 1,093 x 99 mm (73.6" x 43.1" x 3.9")	1,484 x 859 x 97 mm (58.5" x 33.8" x 3.9")	1,151 x 672 x 94 mm (45.4" x 26.5" x 3.7")
Bezel Width	Approx. 43 mm (1.7")	Approx. 39 mm (1.6")	Approx. 39 mm (1.6")	Approx. 45 mm (1.8")	Approx. 25 mm (0.98")	Approx. 25 mm (0.98")
Weight	Approx. 84 kg/185.2 lbs.	Approx. 58 kg/127.9 lbs.	Approx. 33 kg/72.8 lbs.	Approx. 83 kg/183.0 lbs.	Approx. 55 kg/121.3 lbs.	Approx. 30 kg/66.2 lbs.
Cabinet Material/Color	Aluminum/Black					
Pitch for Wall-Hanging	VESA compliant 400 x 400 mm (15.8" x 15.8")	684 x 300 mm (27.0" x 11.9")	400 x 300 mm (15.8" x 11.9")	VESA compliant 400 x 400 mm (15.8" x 15.8")	684 x 300 mm (27.0" x 11.9")	400 x 300 mm (15.8" x 11.9")
Protective Glass Thickness	Approx. 4 mm (0.16")/Anti-Glare	Approx. 3.2 mm (0.13")/Anti-Glare	Approx. 2.5 mm (0.10")/Anti-Glare	Approx. 4 mm (0.16")/Anti-Glare	Approx. 3.2 mm (0.13")/Anti-Glare	Approx. 2.5 mm (0.10")/Anti-Glare
ENVIRONMENTAL						
Operating Environment	Temperature: 0°C to 40°C (32°F to 104°F)			Humidity: 20% to 80% (Non-condensation)		
Storage Environment	Temperature: -20°C to 60°C (-4°F to 140°F)			Humidity: 20% to 80% (Non-condensation)		
Included Accessories	AC cord, remote control transmitter, batteries for the remote control transmitter (AA size x 2), software CD-ROM (Whiteboard Software/Wireless Manager Software/Operating Instructions) x 1, USB cable x 1, Touch Pen x 4 (TH-80LFB70), Touch Pen x 2 (TH-65LFB70/50LFB70), Eraser x 1, Pen Stand, operating instruction book			AC cord, remote control transmitter, batteries for the remote control transmitter (AA size x 2), software CD-ROM (Wireless Manager Software/Operating Instructions) x 1, operating instruction book		
BUILT-IN WIRELESS LAN FUNCTION						
Standard	2.4 GHz: IEEE802.11b/g/n, 5.0 GHz: IEEE802.11a/n					
Infrastructure Mode	WPA2-PSK (TKIP/AES), WPA-PSK (TKIP/AES), WEP (64-bit/128-bit), WPA-EAP/WPA2-EAP (PEAP [MS-CHAPv2/GTC]/EAP-FAST [MS-CHAPv2/GTC]/EAP-TTLS [MD5/MS-CHAPv2]), 128-bit/64-bit					

Panasonic®



For more information about Panasonic professional displays, please visit:
Global Web Site – panasonic.net/prodisplays
YouTube – www.youtube.com/PanasonicProDisplay

Weights and dimensions shown are approximate. Specifications and appearance are subject to change without notice. Product availability differs depending on region and country. This product may be subject to export control regulations. Windows, Windows Vista and PowerPoint are trademarks of Microsoft Corporation in the United States and other countries. Android is a registered trademark or trademark of Google Inc. Macintosh, Mac, Mac OS X, iPad, iPhone, iPod touch and iTunes are trademarks of Apple Inc., registered in the U.S. and other countries. The PLink trademark is an application trademark in Japan, the United States, and other countries and regions or registered trademarks. HDMI, the HDMI logo, and High-Definition Multimedia Interface are trademarks or registered trademarks of HDMI Licensing LLC in the United States and other countries. Crestron Connected™ is a trademark of Crestron Electronics, Inc. Wi-Fi® and Miracast™ are trademarks or registered trademarks of Wi-Fi Alliance. HDBaseT™ is a trademark of the HDBaseT Alliance. All other trademarks are the property of their respective trademark owners. Images on screen are simulated. Use of this product shall be in compliance with all relevant and applicable copyright protection laws. Data or work entered by the user into the Product's external inputs (including but not limited to motion pictures and photography) shall be the creation of the user (excluding quoting) or shall be authorized for use by the author(s) of the data or work. Panasonic has no right or authority to grant the Product user any license, rights, and titles to use, modify, copy, or distribute, etc., any data or work not created by the user or used with express permission of the data or work's author(s). © 2014 Panasonic Corporation. All rights reserved.

All information included here is valid as of May 2014.

CT14-G01PF-LFB/LFC Printed in Japan.